



© House of Habsburg  
and partners



©

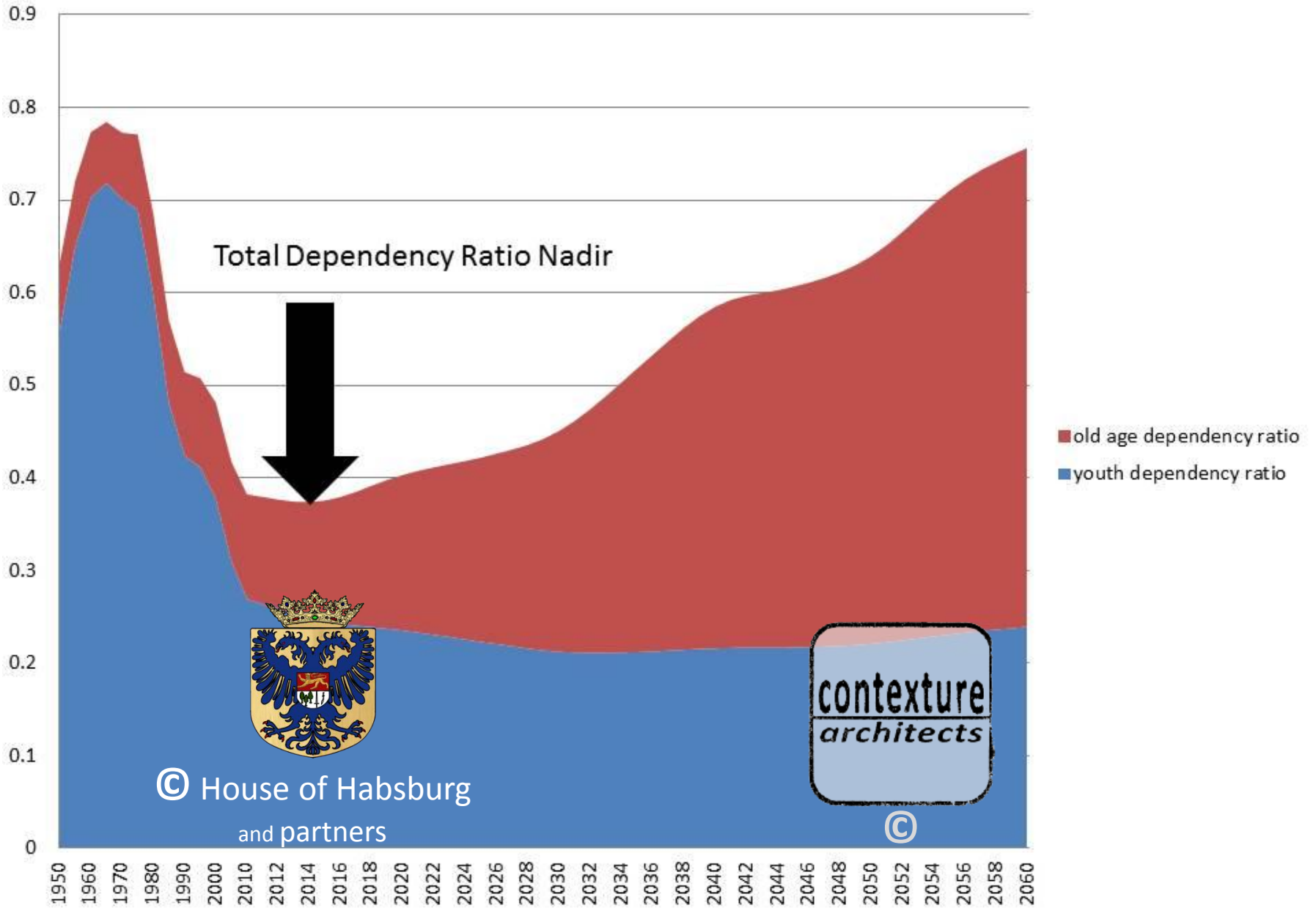


# Holistic Aged Care City





# China's Dependency Ratio



© House of Habsburg  
and partners

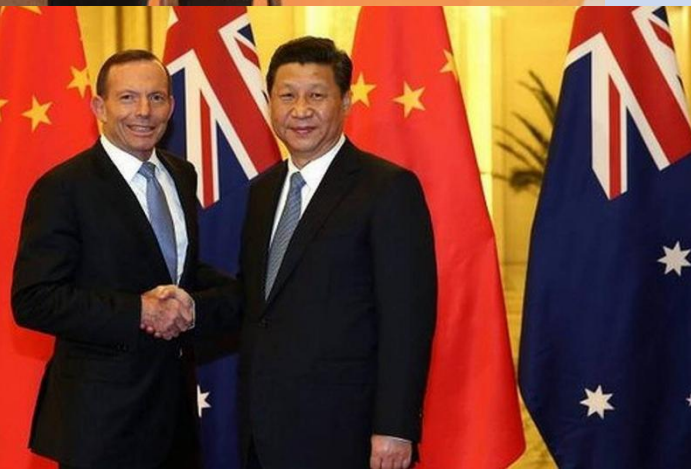
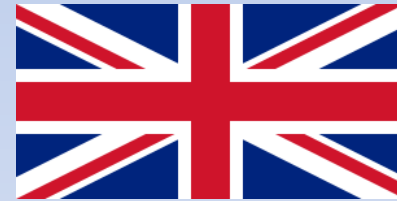
contexture  
architects

©

# Solutions from Abroad?



© House of Habsburg  
and partners



# Different Stages / Different Challenges



- at Home



- Retirement Living



- Low Level Care



- High Level Care





# Combine Solutions in Design and Operations



# Complete Solution / Full City

## Example

60,000m<sup>2</sup> Buildings  
on 100 Mu (66.7ha)

Rehabilitation Centre  
Complex Building  
Senior Apartments  
Nursing Home  
Dementia village  
Senior Care Centre  
Staff Centre  
Hospice  
Welfare Centre  
Shops  
Restaurants

乐龄康复医院  
综合大楼  
(宾馆/双创中心)  
养老公寓  
养老院  
失智老人村



老年人护理中心  
员工及物资中心  
临终关怀中心

福利中心  
商店  
餐厅



© House of Habsburg  
and partners



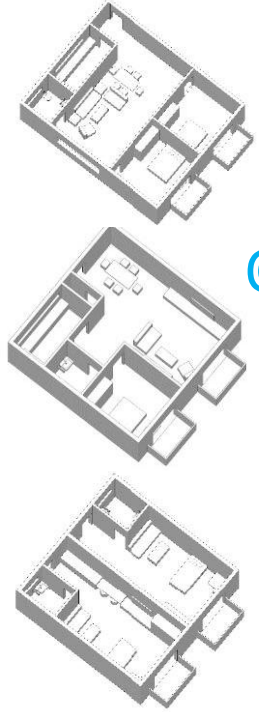
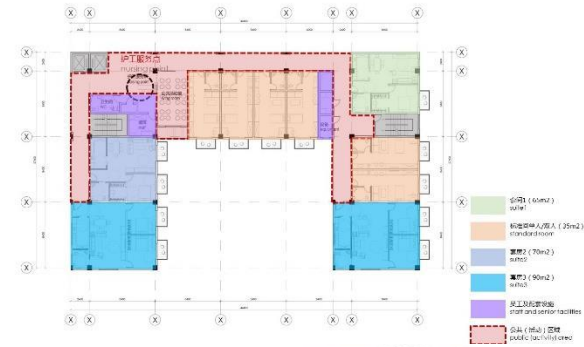


©



© House of Habsburg and partners

# Senior Apartments 老年公寓







© House of Habsburg  
and partners



©



**Senior Apartments**  
老年公寓





© House of Habsburg  
and partners



## Senior Leisure Centre / Shops / Restaurants 养老综合服务中心 / 老创客一条街

*Potential for public shared Theatre, Cinema, Swimming pool, rehabilitation, sporting facilities, etc.  
Provision of public facilities like childcare, extra-curricular schooling, etc.*





- 多功能活动区  
multifunction activity
- 养老服务功能  
senior care
- 办公管理  
office



深化设计时，多功能活动区将进一步安排如放映室等其他娱乐活动空间  
In further design stage, movie room and other entertaining programs can be fill in the multifunction activities area.



二楼的餐厅和活动中心作为连接会所和商业平台的过渡，5个体量，将一在整体的建筑形态下，体块之间的咬合，需再增加连接过道  
The restaurant and activity center on the 2nd floor are the transition space from terrace of nursing home to the commercial street, the separated volumes are connected under the roof, but the gaps in between allow the connection of both sides.

- 餐厅及咖啡厅  
restaurant
- 老年活动中心  
senior activity center
- 店铺  
shops



# Senior Day Care Centre 老年日间照料中心

## Restaurants 餐厅







© House of Habsburg  
and partners



©

Rehabilitation Park , Squares, Green spaces

康复公园 广场 绿化空间







©



# Welfare Centre 福利中心



© House of Habsburg  
and partners



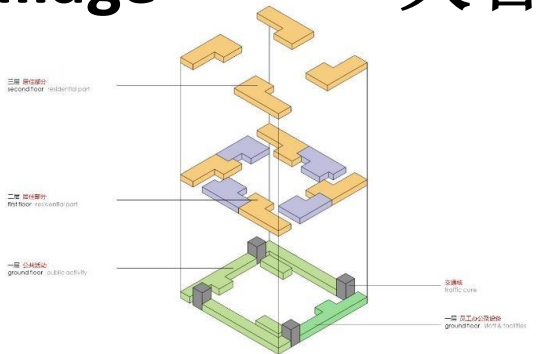


© House of Habsburg  
and partners

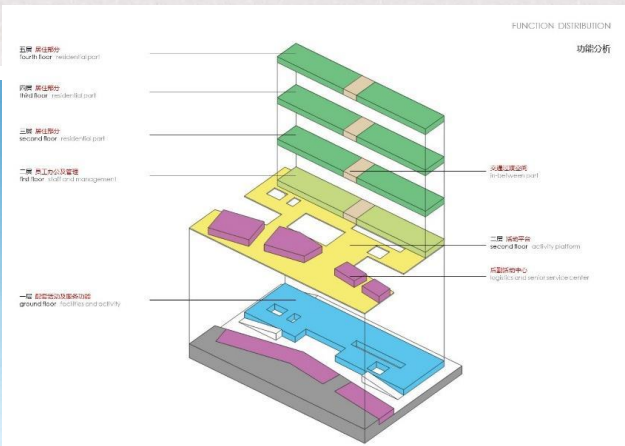


# Dementia Village

# 失智老人村







Nursing Home 养老院

© House of Habsburg  
and partners







© House of Habsburg  
and partners



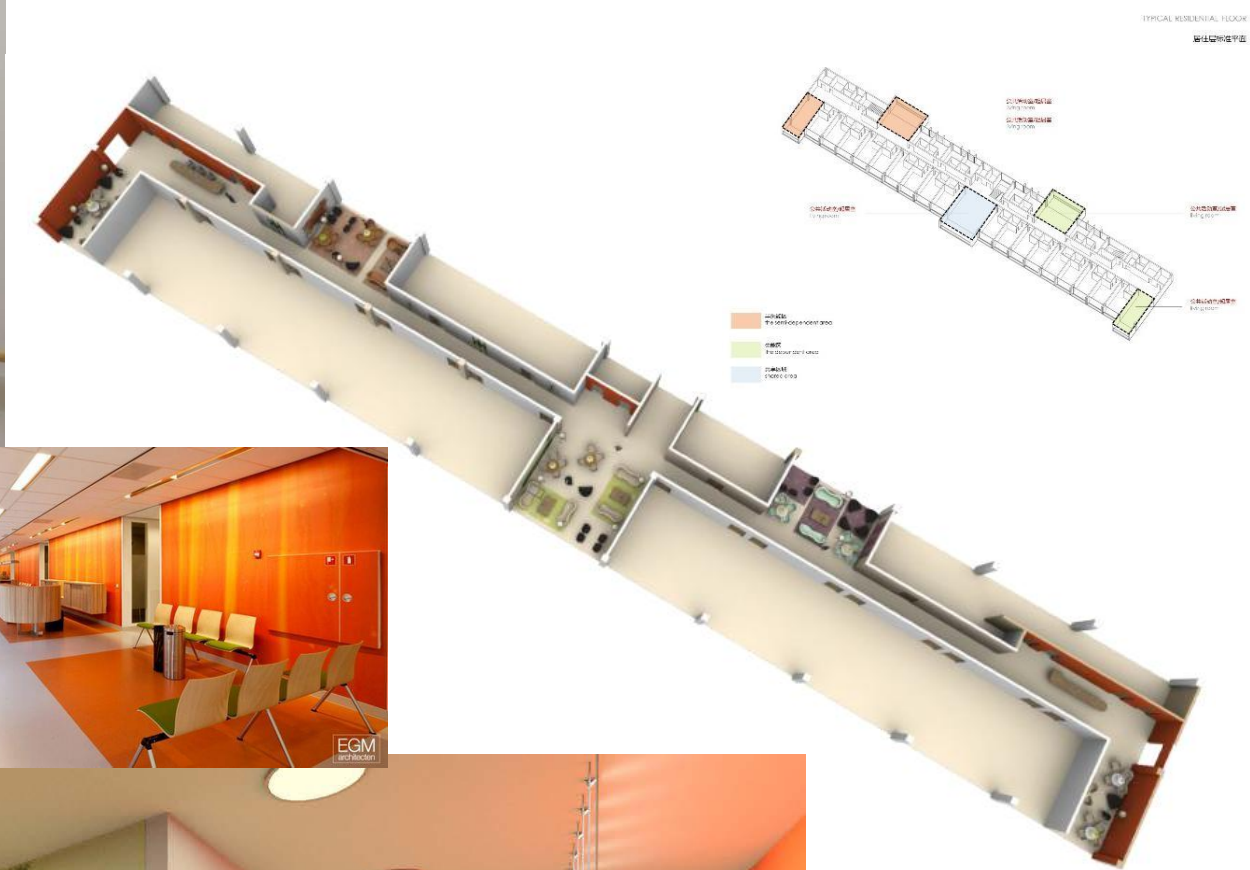
©



## Nursing Home 养老院







# Nursing Home 养老院



© House of Habsburg  
and partners

contexture  
architects







Nursing Home 养老院

## Staff Centre 员工中心



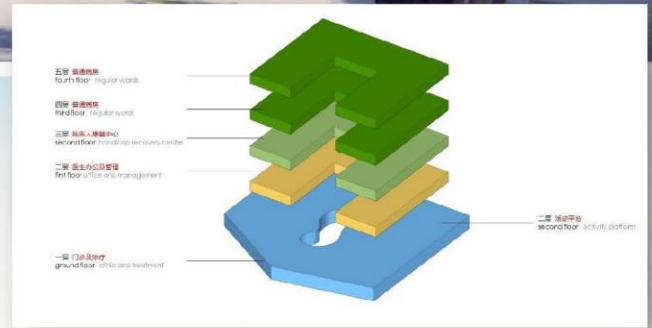
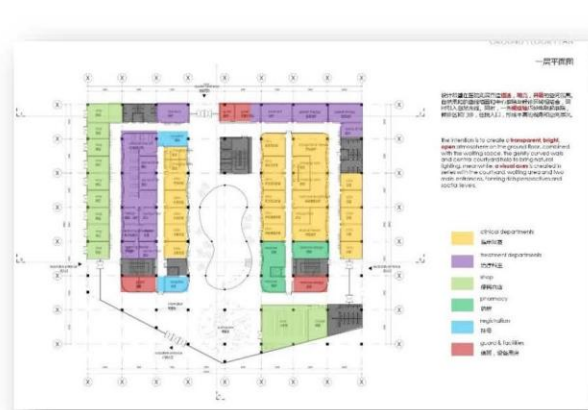
© House of Habsburg  
and partners



©







# Rehabilitation Clinic 康复医院



© House of Habsburg  
and partners





© House of Habsburg  
and partners



©

# Rehabilitation Clinic 康复医院

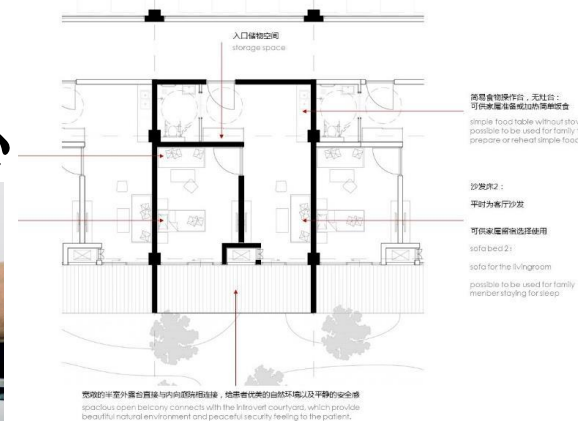




© House of Habsburg and partners



# Hospice 临终关怀中心







© House of Habsburg  
and partners



©



**Dementia Village**  
失智老人村

**Complex Building**  
综合大楼



# Senior City

Where we ourselves like to retire

Where children feel their parents are safe and happy



© House of Habsburg  
and partners



©



# Senior City Example Data

## SENIOR APARTMENTS:

4.428 m<sup>2</sup>, 50 units  
incl. 30 single room unit, 10 double, 10  
triple.  
43,4m<sup>2</sup>/bed

## WELFARE CENTRE:

5.510 m<sup>2</sup>, 226 beds  
34 beds for personnel, 2-3 beds  
144 beds for 3 no person, 2-4 be  
48 beds for orphan, 3 or 12 bed

## SENIOR SERVICE CENTRE:

33245 m<sup>2</sup>, restaurant, activity a

## SHOPS:

1944 m<sup>2</sup>  
Incl. 1062 m<sup>2</sup> square shop, 882 m<sup>2</sup> street  
shop

## NURSING HOME:

8.300 m<sup>2</sup>, 210 beds  
3-4beds/ room normal/ invalid  
39,5m<sup>2</sup> /bed

## RECOVERY CLINIC:

11.157 m<sup>2</sup>, 93 beds  
2-3 beds/room

## DEMENTIA VILLAGE:

7.755 m<sup>2</sup>, 102 beds,  
1-2 beds / room  
77m<sup>2</sup>/bed



© House of Habsburg  
and partners



# Staffing, Management and Training

providing  
professional qualified staff:

- Aged Care Manager
- Nurse Manager
- Dementia Manager
- Rehabilitation Manager
- Hospice Manager
- Community Care Manager

UK, AU or NL registered  
CQC / accreditation  
experienced







# Operational Management and Staff Training

© House of Habsburg  
and partners





# Accreditation

- In-house accreditation

## Care Quality Control Certificate



© House of Habsburg  
and partners





# Proposed Timeline Consultancy Services





# Benefits of Holistic Approach

- Benefits individuals
  - Increases positive health outcome and thus less reliance on health provisions, cost savings.
  - Community Care model saves (government) around 40%
  - Saves on labour by cross use of staff.
  - Marketing / Sales
  - Government support
  - (Aged) community involvement
- Cost Reductions / Improved General Health*

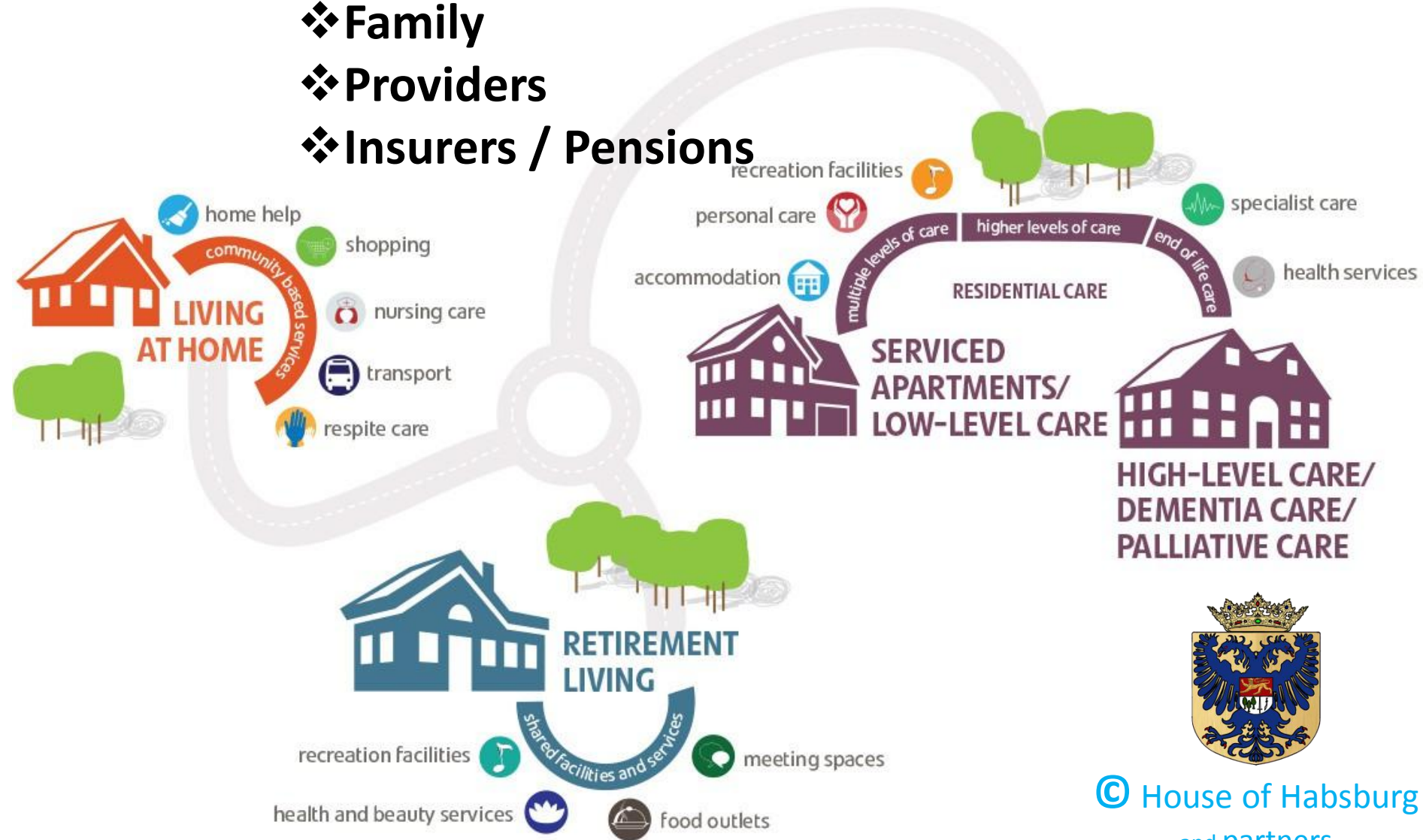




# Integration and Coordination of all Services

## Integration of Involvement:

- ❖ Government
- ❖ Family
- ❖ Providers
- ❖ Insurers / Pensions





# ? Need Only Some Options ?

✓ Specialist Architect / Planning

• ~~Construction~~ *(depending on location)*

✓ Specialist Recruitment

✓ Training / Preparation

✓ Operational Management

• ~~Sales & Marketing~~ *(advise only)*

✓ Accreditation (CQCC)

✓ General Consultation Services  
per hour/day

✓ Funding / Investment Resourcing



© House of Habsburg  
and partners



# QUESTIONS ?





© House of Habsburg  
and partners

## Contact Us

[www.House-of-Habsburg.org](http://www.House-of-Habsburg.org)

# **A House of Habsburg and Contexture Architects *joint venture***

CN OFFICE  
A12B04 TOP Yihe International  
No. 10 Hong Kong Middle Road, Qingdao  
青岛市市南区香港中路10号颐和国际A12B04  
+86-15610045651  
[www.contexturearchitects.nl](http://www.contexturearchitects.nl)  
283985352@qq.com



NL OFFICE  
Overschiestraat 182  
1062XK Amsterdam The Netherlands  
+31-20-6691647  
[www.contexturearchitects.nl](http://www.contexturearchitects.nl)  
[info@contexturearchitects.nl](mailto:info@contexturearchitects.nl)

***International Expertise combined to ensure maximum  
benefits and success for your Aged Care facilities***